



MODELO / MODEL

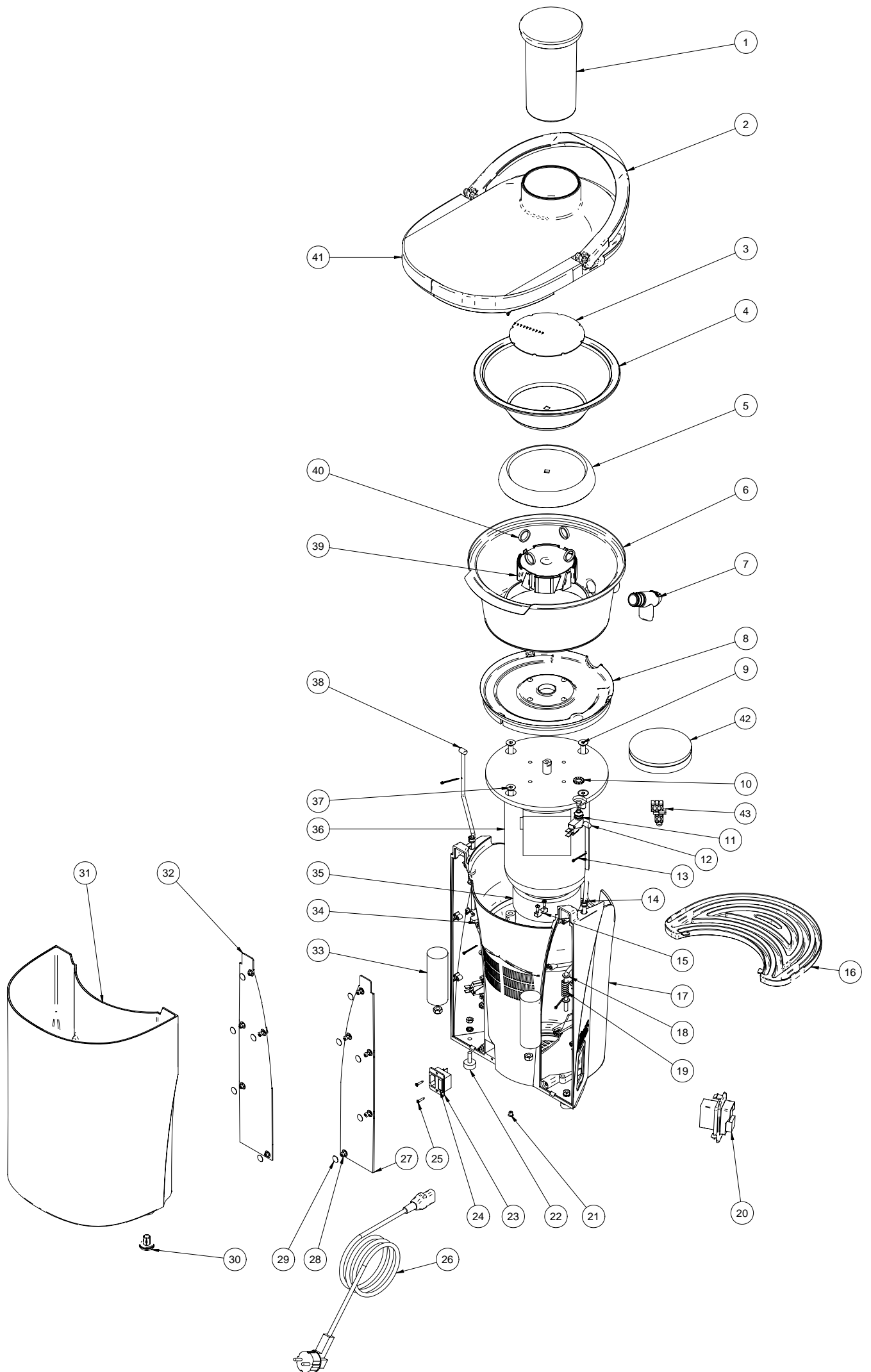
## LICUADORA Z1

Nr. Desde/from 226442 hasta/to .....

**Rev 00**

### INDICE / INDEX

Vista explosionada/Exploded view.....	Pag 2
Lista de piezas/ Part list.....	Pag 3
Esquema electrónico/Electronic diagram .....	Pag 5



NÚMERO DE PIEZA PART NUMBER	REFERENCIA REFERENCE	COMPUESTO POR COMPOSED BY	DESCRIPCIÓN	DESCRIPTION	CANTIDAD POR MÁQUINA QUANTITY PER MACHINE	LOTE DISTRIBUCION DISTRIBUTION LOT
1	32.1037.000		Empujador Lic-z	Pusher Lic-z	1	1
2	32.1001.000		Asa cierre Lic-z	Handle Lic-z	1	6
3	32.1035.000		Disco rallador Lic-z	Grating disc Lic-z	1	10
4	32.1002.000		Filtro Lic-z	Filter Lic-z	1	1
5	200.1203.000		Arrastre filtro Lic-z	Filter-drive Lic-z	1	1
6	32.1033.000		Cubeta inox Lic-z	Stainless steel bucket Lic-z	1	1
7	32.1005.000		Antigoteo Lic-z	Antileaking Lic-z	1	20
8	32.1006.000		Kit apoyo goma cubeta Lic-z	Rubber bucket support kit	1	7
		1 Ud / 200.1213.000	Apoyo goma cubeta Lic-z	Tray seal support Loc-z		
		5 Ud / 180.0036.000	Remache plast moss 460462	Moss 460462 plastic rivet		
9	100.0909.129		Tornillo DIN 7991 M8 x 30 l	DIN 7991 M8 x 30 l screw	4	1
10	105.0915.010		Arandela DIN 6798 D10 l	DIN 6798 D10 l washer	2	1
11	32.1009.000		Microruptor D489-VGPU	Safety switch D489-VGPU	2	25
12	200.1217.000		Varilla inox cierre der Lic-z	Closing right stick Lic-z	1	1
13	135.0001.000		Pasador aletas DIN 94 2 x 25 l	DIN 94 2 x 25 l bolt	5	1
14	200.1218.000		Retén varilla cierre Lic-z	Closing stick gasket Lic-z	2	1
15	200.3362.000		Brida sup fijación cable	Upper power cord clamp	1	1
16	32.1016.000		Posavasos Lic-z	Coaster Lic-z	1	10
17	13.950.000		Base Lic-z	Body Lic-z	1	1
18	105.0910.006		Arandela DIN 125 M6 Forma A	DIN 125 M6 A washer	6	1
19	255.1005.000		Muelle D12 x 31 x 2 Lic-z	D12 x 31 x 2 spring Lic-z	2	1
20	32.1017.000		Kit interruptor 0-volts 230V Lic-z (1)	Switch 0-volts 230V Lic-z kit (1)	1	5
		1 Ud / 155.1150.000	Interruptor 0-volts 230V Lic-z	Switch 0-volts 230V Lic-z		
		1 Ud / 200.1204.000	Placa interruptor lic-z	Switch plate Lic-z		
	32.1018.000		Kit interruptor 0-volts 115V Lic-z (2)	Switch 0-volts 115V Lic-z kit (2)	1	5
		1 Ud / 155.1151.000	Interruptor 0-volts 115V Lic-z	Switch 0-volts 115V Lic-z		
	1 Ud / 200.1204.000	Placa interruptor lic-z	Switch plate Lic-z			
21	180.0032.000		Expansionador heyco 072 5899	Mx expansible thread heyco	3	1
22	32.1019.000		Kit pie Lic-z	Leg Lic-z kit	1	30
		3 Ud / 180.0030.101	Pie Lic-z	Leg Lic-z		
23	155.1152.000		Base IEC fusible	LZ 1 power supply housing	1	1
24	220.0068.000		Fusible 10A (1) (2)	Fuse 10A (1) (2)	1	1
	155.1159.000		Fusible 16A (3)	Fuse 16A (3)	1	1
25	100.0922.033		Tornillo DIN 7982B 2,9 x 16 l	DIN 7982B 2,9 x 16 l screw	2	1

26	155.1153.000		Cable schuko IEC <b>(1)</b>	Schuko IEC corset <b>(1)</b>	1	1
	155.1156.000		Cable GB IEC <b>(2)</b>	GB power supply cordset <b>(2)</b>	1	1
	155.1154.000		Cable UL IEC <b>(3)</b>	UL power supply cordset <b>(3)</b>	1	1
27	200.1206.000		Tapa tras der Lic-z	LZ 1 right rear plastic cover	1	1
28	100.0903.062		Tornillo DIN 912 M4 x 6 Inox	DIN 912 M4 x 6 I screw	10	1
29	120.0019.010		Tapón allen M4 gris	Allen M4 grey cap	10	1
30	32.1025.000		Pies MX	Permanent feet MX	3	30
31	32.1026.000		Cubo residuos Lic-z	Peel bucket Lic-z	1	1
32	200.1205.000		Tapa tras izq Lic-z	LZ 1 left rear plastic cover	1	1
33	32.1020.000		Kit condensadores 20µF 400V fast-on	20µF 400V M8 fast-on capacitors kit	1	6
		2 Ud / 155.0016.020	Condensador 20µF 400V fast-on	20µF 400V M8 fast-on capacitor		
34	200.1222.101		Tope microrruptor Lic-z	LZ 1 microswitch lever	1	1
35	200.1221.000		Conducción aire motor Lic-z	LZ 1 motor air outlet	1	1
36	32.1031.000		Kit motor 3/4 HP 115/220V Lic-z	Motor lic-z 3/4 HP 115/220V kit	1	1
		1 Ud / 160.0130.000	Motor 3/4 freno 115/230V lic-z	Brake 3/4 motor Lic-z		
		4 Ud / 100.0909129	Tornillo DIN 7991 M8 x 30 I	DIN 7991 M8 x 30 I screw		
37	100.0909.129		Tornillo DIN 7991 M8 x 30 I	DIN 7991 M8 x 30 I screw	4	1
38	200.1216.000		Varilla inox cierre izq Lic-z	LZ 1 inox left safety bar	1	1
39	200.1202.000		Arrastre motor Lic-z	Motor-drive Lic-z	1	1
40	32.1034.000		Kit gomas arrastre Lic-z	Rubbers ring drive plate Lic-z kit	1	40
		4 Ud / 200.1223.000	Goma arrastre Lic-z	Rubber ring drive plate Lic-z		
41	32.1036.000		Tapa Lic-z	Upper cover Lic-z	1	1
42	32.1021.000		Freno motor Lic-z	Motor brake Lic-z	1	1
		1 Ud / 155.1166.000	Freno eléctrico Lic-z	Electrical brake Lic-z		
		1 Ud / 100.1908.006	Tuerca DIN 985 M6 inox	DIN 985 M-6 I. nut		
43	13.996.000		Regleta componentes electronicos Lic-z	Electronical components device	1	1

(1) LICUADORA 230 V

(2) LICUADORA 230 MODELOS GB / GB MODELS

(3) LICUADORA 115 V

# ESQUEMA ELECTRONICO LICUADORA Z1

## LICUADORA Z1 ELECTRONIC DIAGRAM

